

Tom A300-600ST

Maintenance Facility Planing

MFP



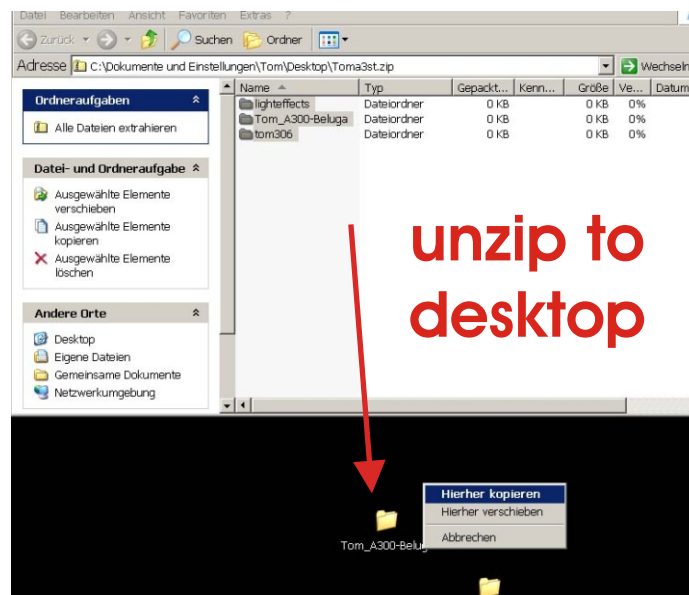
Version 10 02/2010

Tom A300-600ST

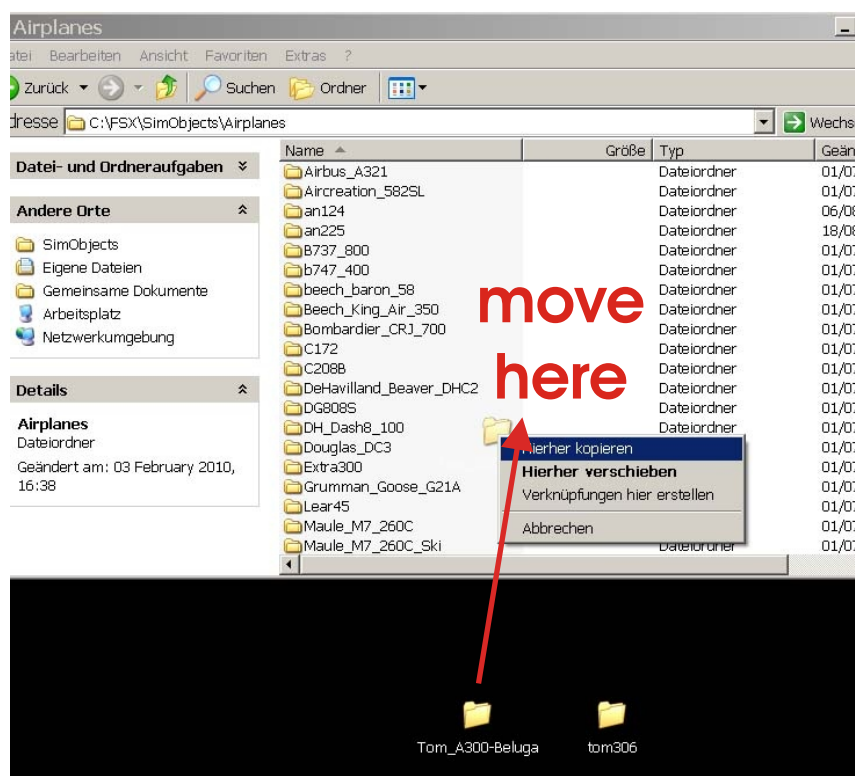
Maintenance Facility Planing MFP

1. Installation in FSX

1) Unzip TOMA3ST.ZIP to your desktop



2) Move the complete Tom_A300-Beluga folder into your FSX/SimObjects/Airplanes folder.

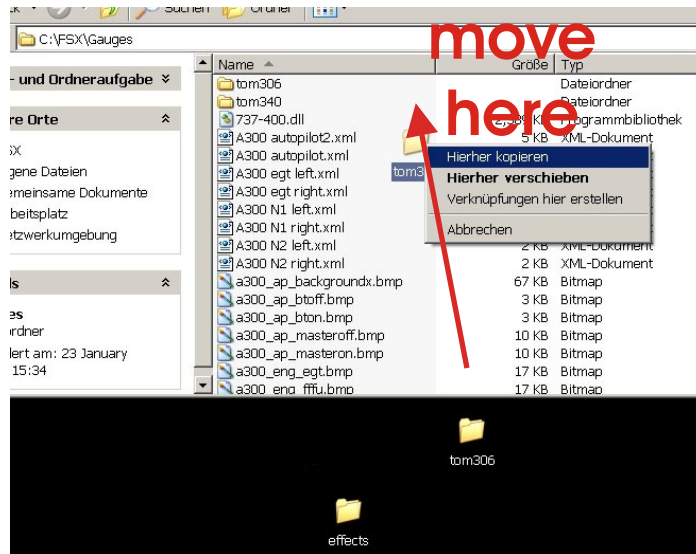


Version 10 02/2010

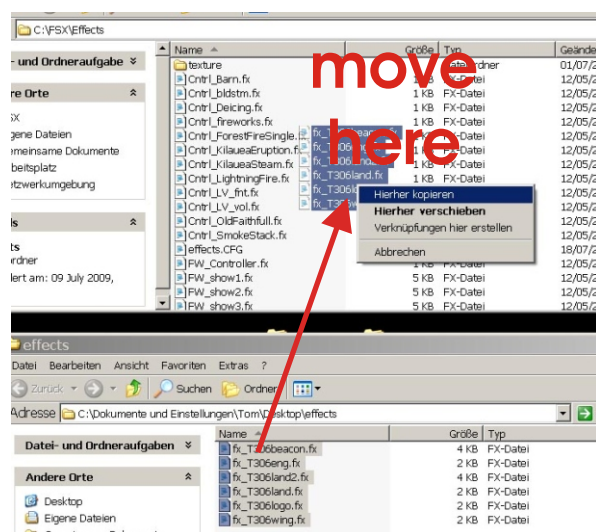
Tom A300-600ST

Maintenance Facility Planing MFP

- 3) Move the complete **tom306** folder into your FSX/Gauges folder. If you have already the A300-600 package installed, overwrite the existing tom306 folder. If you have already a A300 service pack installed, do not overwrite.



- 4) Move all files from the **effects** folder into your FSX/Effects folder.



Version 10 02/2010

Tom A300-600ST

Maintenance Facility Planing MFP

5. KnownBugs

1) Disapearing or flashing lights:

Try to increase the "NUM_LIGHTS" in the fsx.cfg from 8 to 10

2) Flight envelope protection (Fly by wire)

If you want to activate the FSX fly by wire function, just open the **aircraft.cfg** and remove the // in front of the entrie **fly_by_wire=1** of the **[airplane_geometry]** section.

Just notice that the A300-600ST does not have a full Fly by wire function.

3) The flightmodel is not as good as it should be since i am not an FDE specialist, so this is all i can do for now. Feel free to change wahtever you want.

4) Multiplayer Mode: As for now, the aircraft is not multiplayer compatible. I dont have a solution yet, but theres a multiplayer compatible mdl in the **model/multiplayer subfolder. Its identical to the normal mdl but does not have all of its animations.**

5) Repaints.

Repaint resources are included. Freeware repaints are allowed. Read the copyright.txt which is included in the main zip file.

**YOU NEED AT LEAST FSX SERVICE PACK
1 OR 2 TO RUN THIS AIRCRAFT.
IF YOU DONT HAVE A SERVICE PACK
INSTALLED, THE AIRCRAFT WILL STAY
TRANSPARENT OR BLACK EXCEPT FOR
THE COCKPIT AND WINGS**

Version 10 02/2010